

Installing the Greek Numismatic Keyboard

by Chris Hopkins
Version 2, 25 Sep 2009

Download the GkNum2.zip from http://parthia.com/fonts/unicode_keyboard.htm

Unzip the GkNum2.zip file in a temporary directory; the directory listing will look like this:

Name	Size	Type	Date Modified
amd64		File Folder	9/24/2009 10:39 AM
i386		File Folder	9/24/2009 10:39 AM
ia64		File Folder	9/24/2009 10:39 AM
wow64		File Folder	9/24/2009 10:39 AM
GkNum2_amd64.msi	112 KB	Windows Installer P...	9/24/2009 8:43 AM
GkNum2_i386.msi	112 KB	Windows Installer P...	9/24/2009 8:43 AM
GkNum2_ia64.msi	112 KB	Windows Installer P...	9/24/2009 8:43 AM
setup.exe	140 KB	Application	9/24/2009 8:43 AM

Run the setup.exe program. It will detect your type of computer and install the correct keyboard layout.

The keyboard installation setup is very simple (figures 1-3).

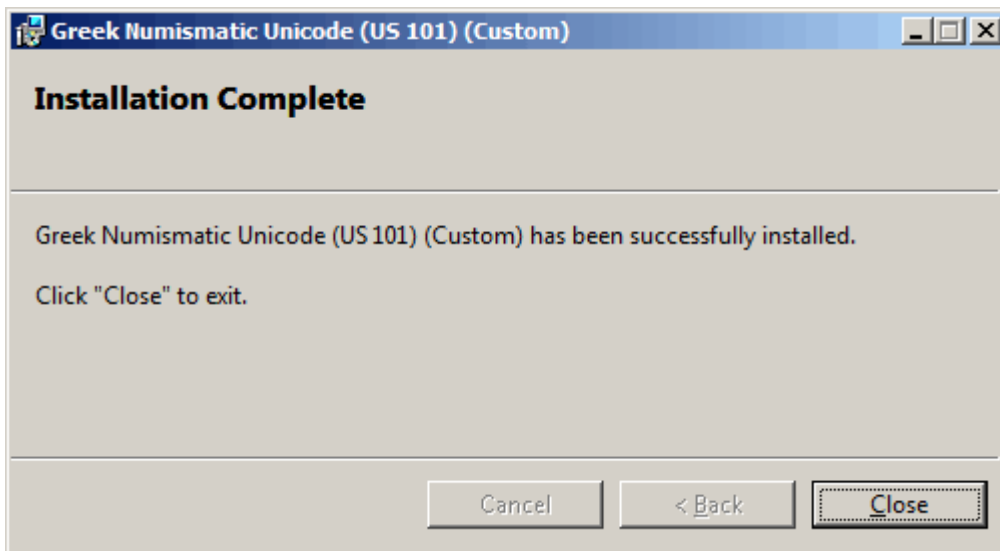


Figure 1: When you run the install program, it immediately installs the keyboard and then announces completion.

If you run the installation program after the keyboard has been installed, the maintenance mode screen appears.

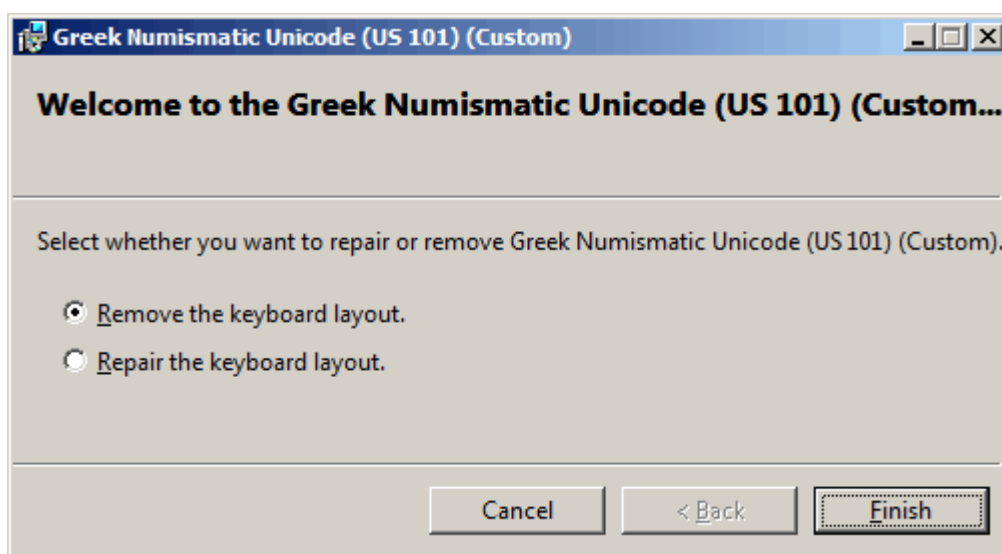


Figure 2: Maintenance mode lets you repair or remove the keyboard layout.

After the maintenance mode has run to remove the keyboard, a dialog appears to confirm removal.

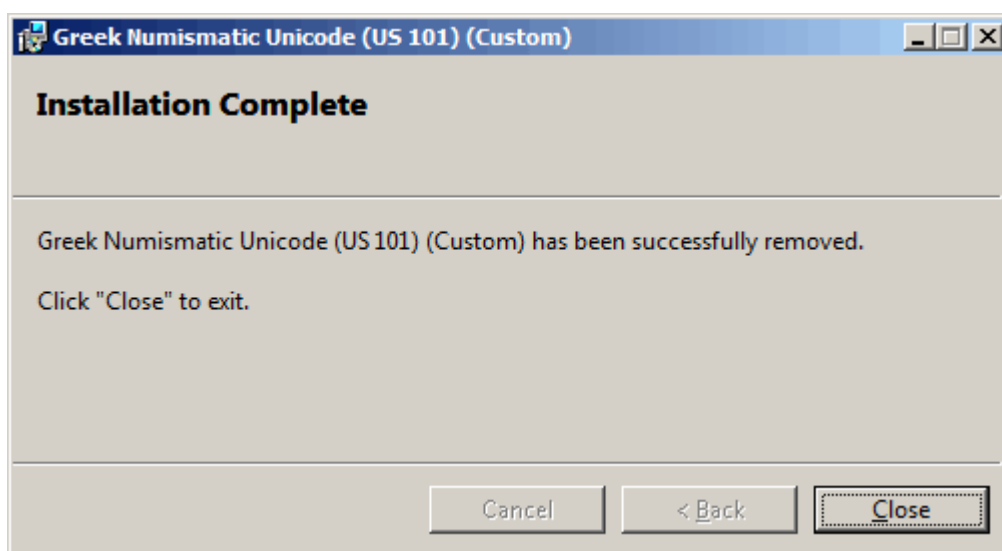


Figure 3: If you uninstall, you are informed that the uninstallation has succeeded.

Installing Keyboard on Windows Vista

Note: On Vista, the keyboard layout will automatically be added to the language bar on install and removed on uninstall. The following instructions only relate to adding the keyboard layout for other users on a machine.

In Windows Vista, a keyboard is known as an input language. To add an input language, you first start in the control panel, where you can find the icon for Regional and Language Options (Figure 1). Click the icon to launch the dialog. Then choose the Keyboards and Languages tab in the middle (Figure 2).



Figure 1: The Regional and Language Options Icon

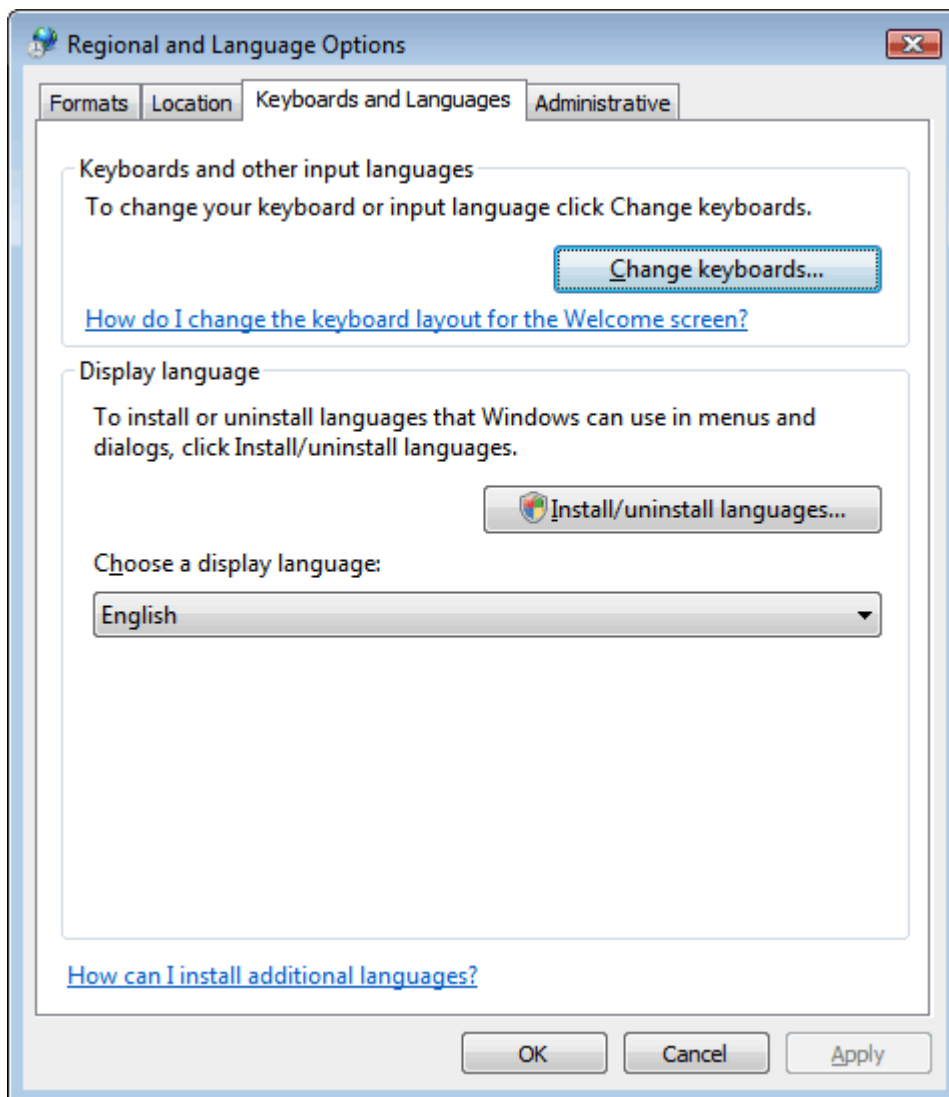


Figure 2: The Keyboards and Languages Tab of Regional and Language Options Dialog

Click the Change Keyboards... button to launch the Text Services and Input Languages dialog (Figure 3).

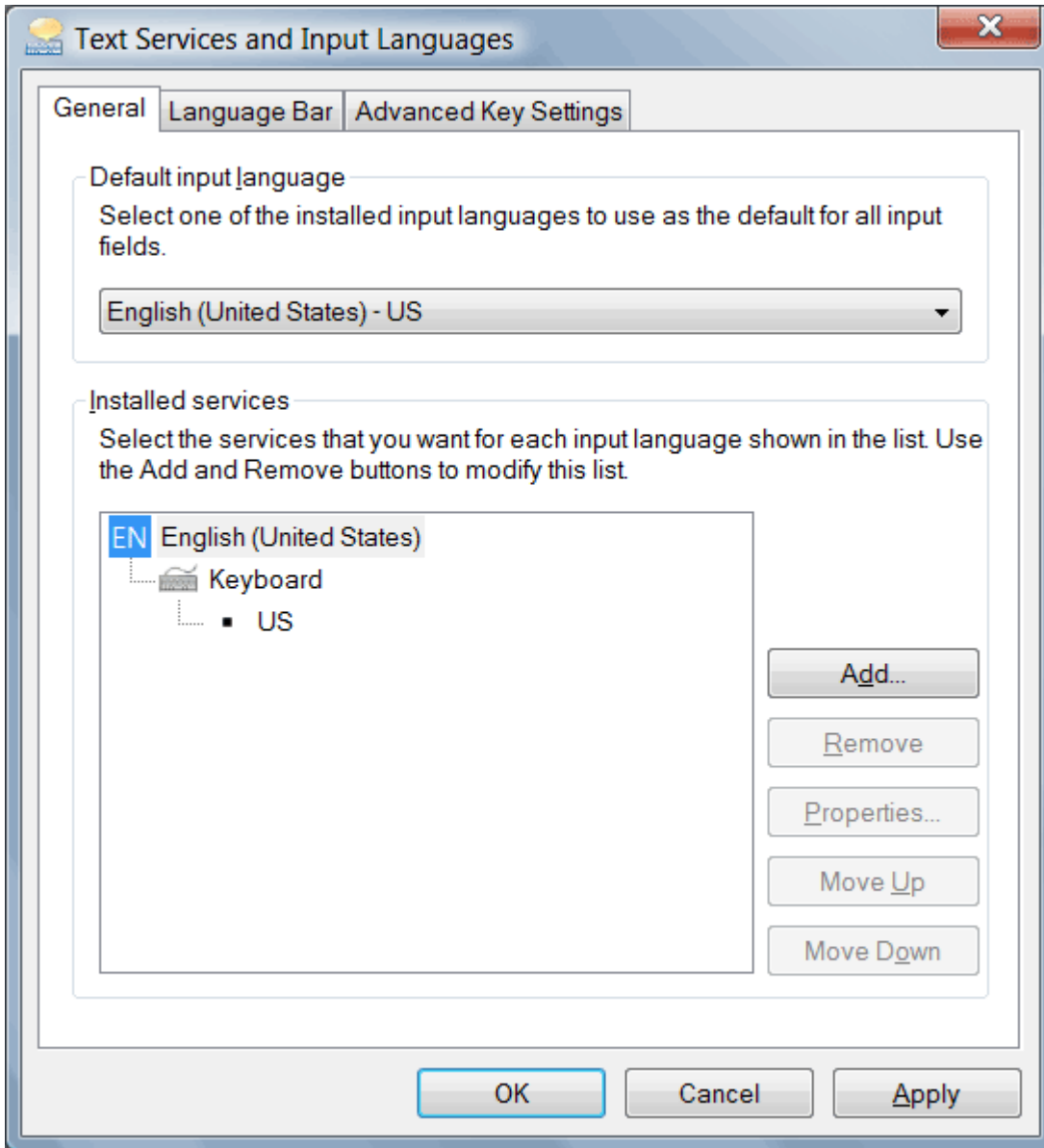


Figure 3: The Text Services and Input Languages Dialog

You will see a 'tree' listing of your input languages, where each main node is a language/region pairing and each branch underneath is a specific input method.

Click the Add button to add an input language. This will launch the Add Input Language dialog). Select the language you want the keyboard to appear under (Figure 4) and then select your custom keyboard layout, then click OK.

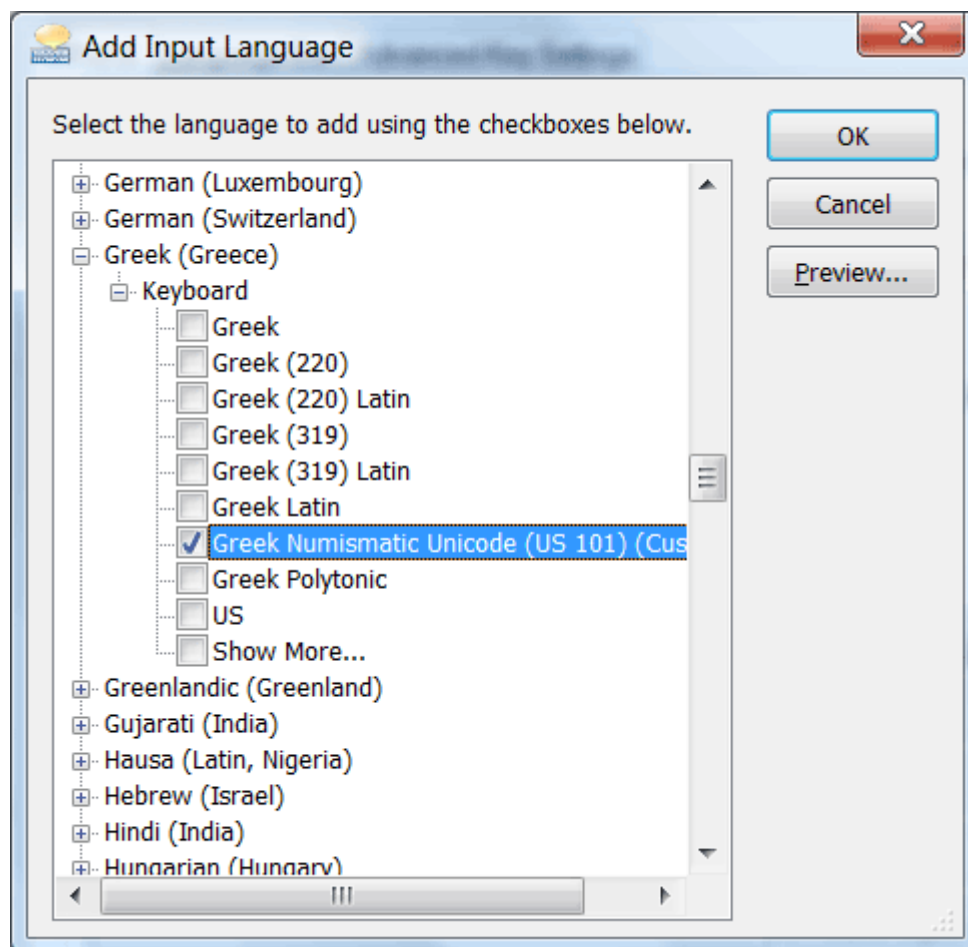


Figure 4: The Add Input Language Dialog

Select the language you want the keyboard to appear under (Figure 5) and then select your custom keyboard layout, then click OK. You will be returned to the Text Services and Input Languages dialog, where you will see that your custom keyboard layout has been added to the tree (Figure 5).

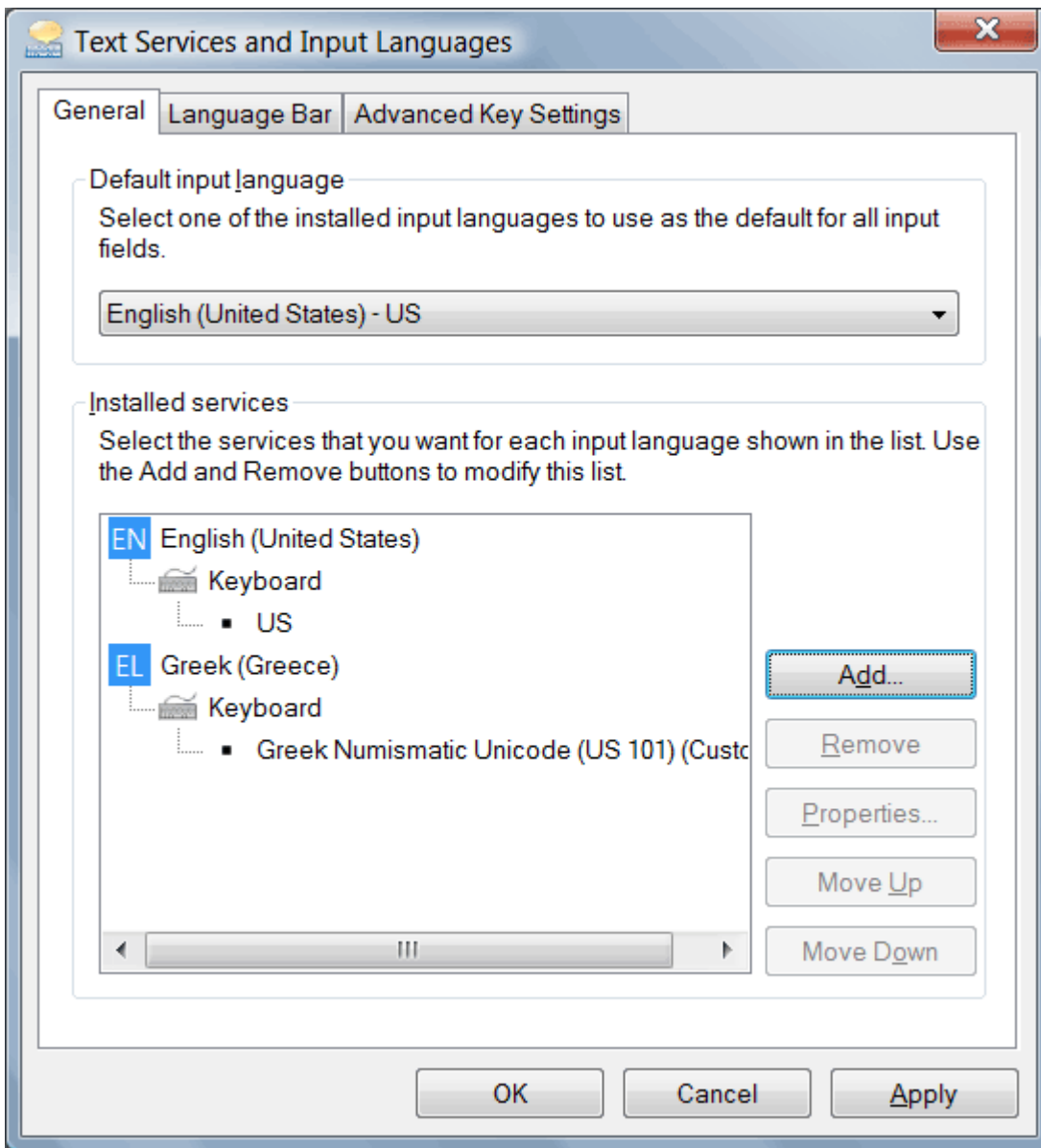


Figure 5: Choosing an input method in the Add Input Language dialog

Select the Language Bar tab and click on the Docked in the taskbar radio button (Figure 6).

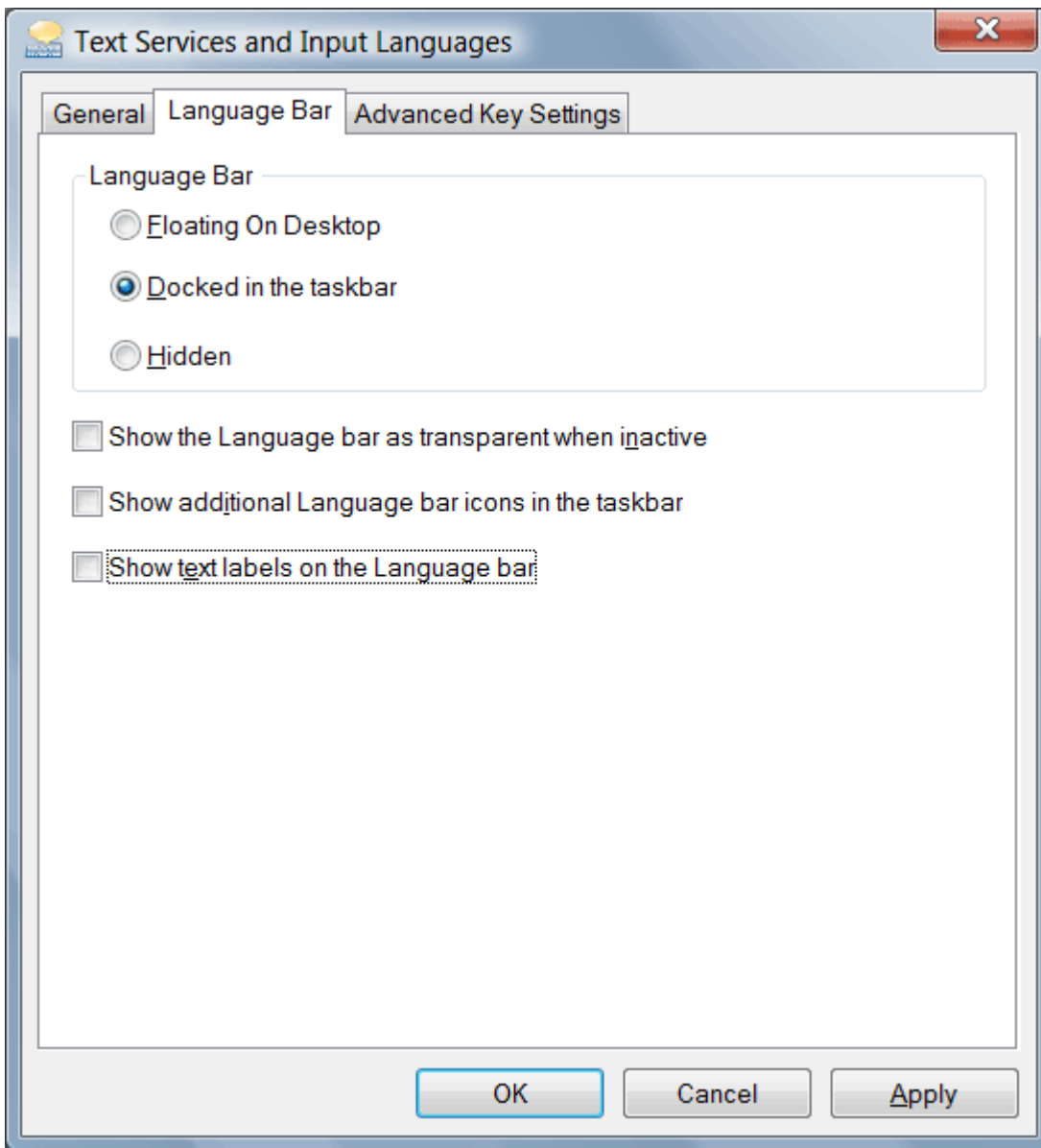


Figure 6: Seeing the New Keyboard Layout in the Text Services and Input Languages Dialog

Select the Advanced Key Settings tab. Select the desired options. "None" is often the best choice for the Key sequence as it avoids inadvertent switching of languages during normal typing in applications. Click on the Apply button and then the OK button to complete the process (Figure 7).

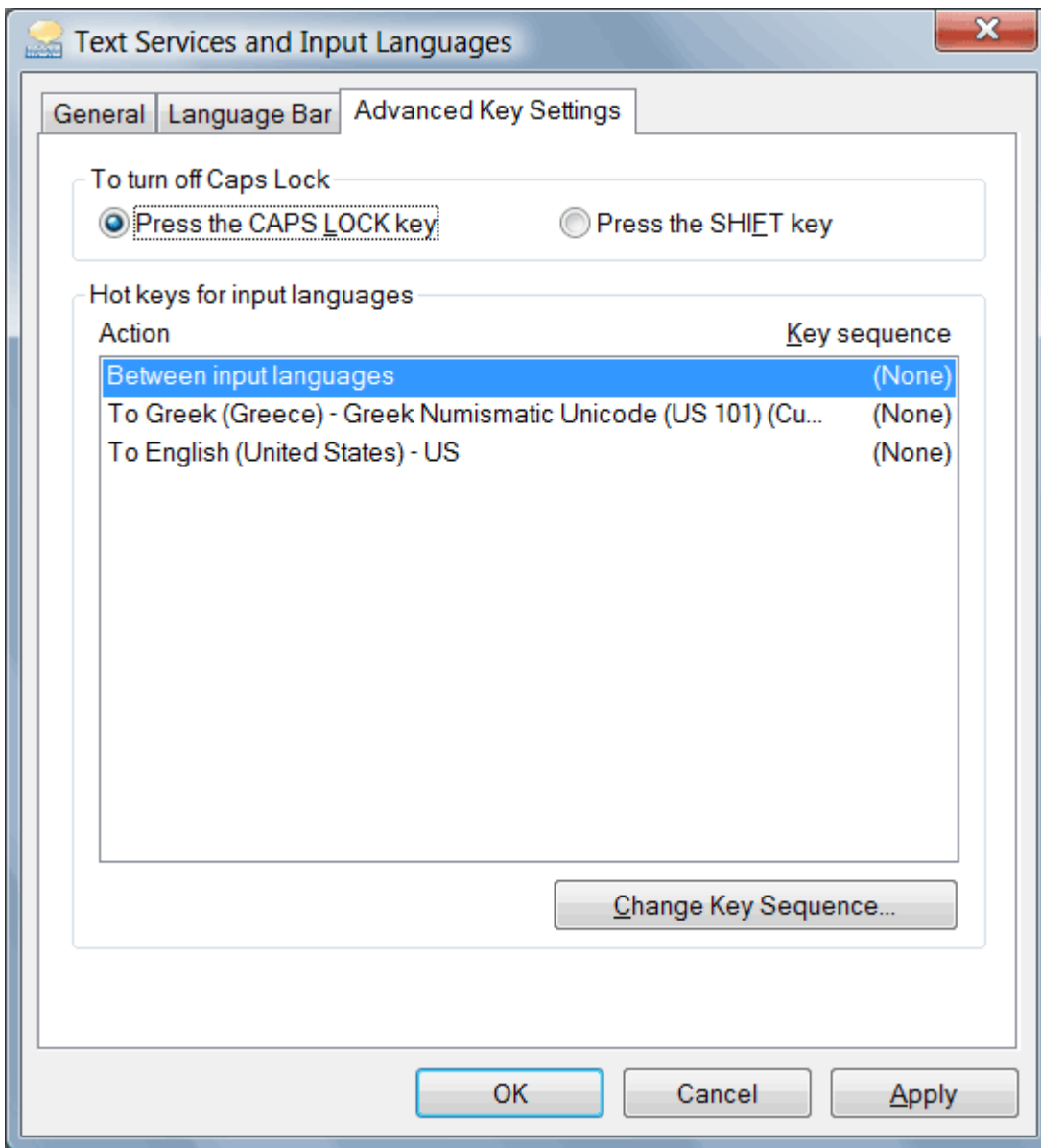


Figure 7: Seeing the New Keyboard Layout in the Text Services and Input Languages Dialog

The language button now appears docked in the task bar (Figure 8). Choose the EL (Greek) option in the Language bar to type Greek and other Unicode characters that are useful to numismatists. See the Keyboard Layout Chart for the available characters.



Figure 8: Seeing the New Keyboard Layout in the Text Services and Input Languages Dialog

Click on the language button in the task bar to reveal the language selection options (Figure 9). If you right click on the language button, more settings are revealed for customization.

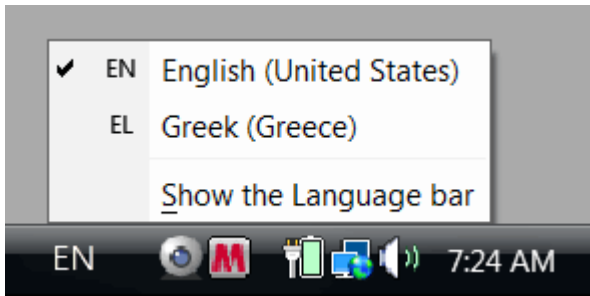


Figure 9: Seeing the New Keyboard Layout in the Text Services and Input Languages Dialog

Installing Keyboard on Windows XP

Note: On Windows XP and Windows Server 2003, the keyboard will automatically be added to the language bar on install and removed on uninstall. The following instructions only relate to adding the keyboard layout for other users on a machine.

In Windows XP and Windows Server 2003, a keyboard is known as an input language. To add an input language, you first start in the control panel, where you will find the icon for Regional and Language Options (Figure 1).



Figure 1: The Regional and Language Options Icon

Click the icon to launch the dialog. Then choose the Languages tab in the middle (Figure 2).

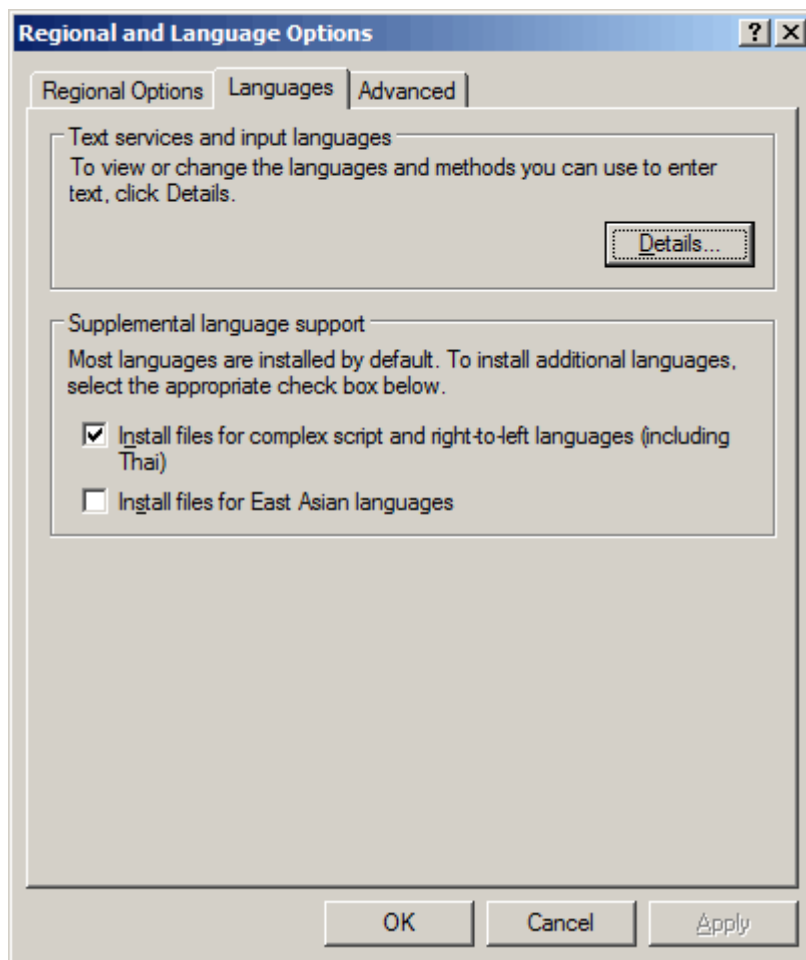


Figure 2: The Languages Tab of Regional and Language Options Dialog

Click the Details button to launch the Text Services and Input Languages dialog (Figure 3).

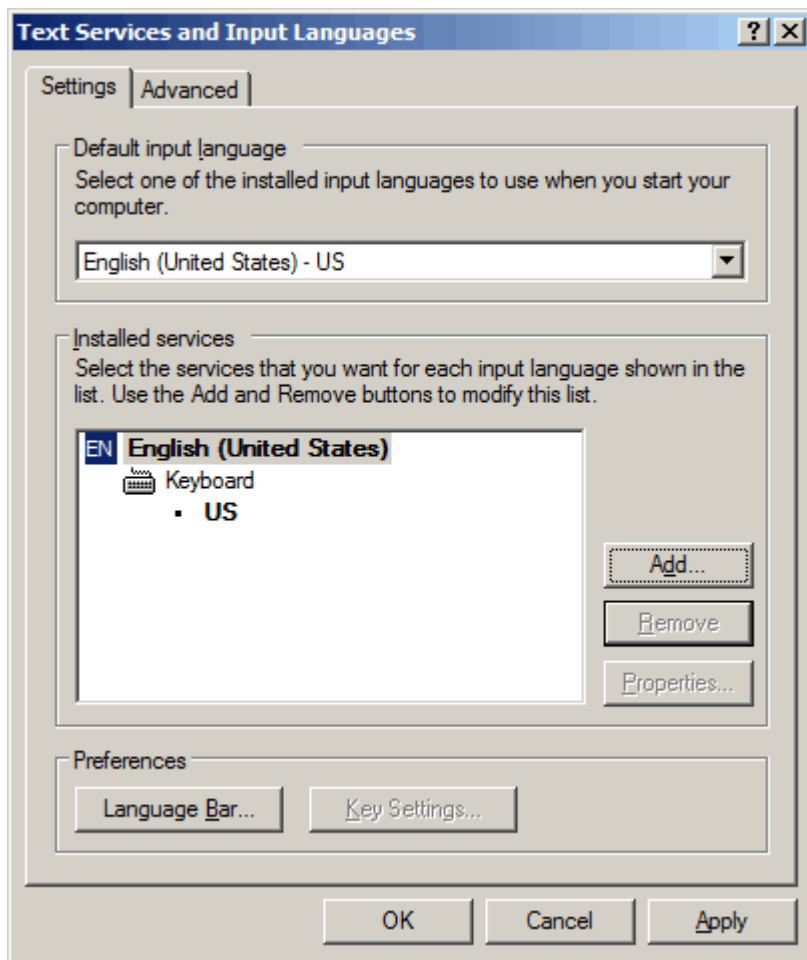


Figure 3: The Text Services and Input Languages Dialog

You will see a 'tree' listing of your input languages, where each main node is a language/region pairing and each branch underneath is a specific input method. From there, click the Add button to add an input language. This will launch the Add Input Language dialog (Figure 4).

Select the language you want the keyboard to appear under (Greek) and then select your custom keyboard layout (Greek Numismatic Unicode), then click OK.

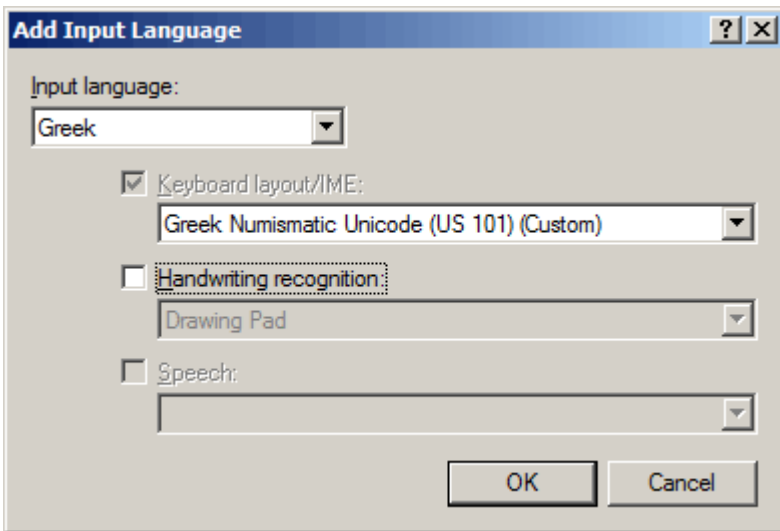


Figure 4: The Add Input Language Dialog

You will be returned to the Text Services and Input Languages dialog, and you will be able to see that your custom keyboard layout has been added to the tree (Figure 5).

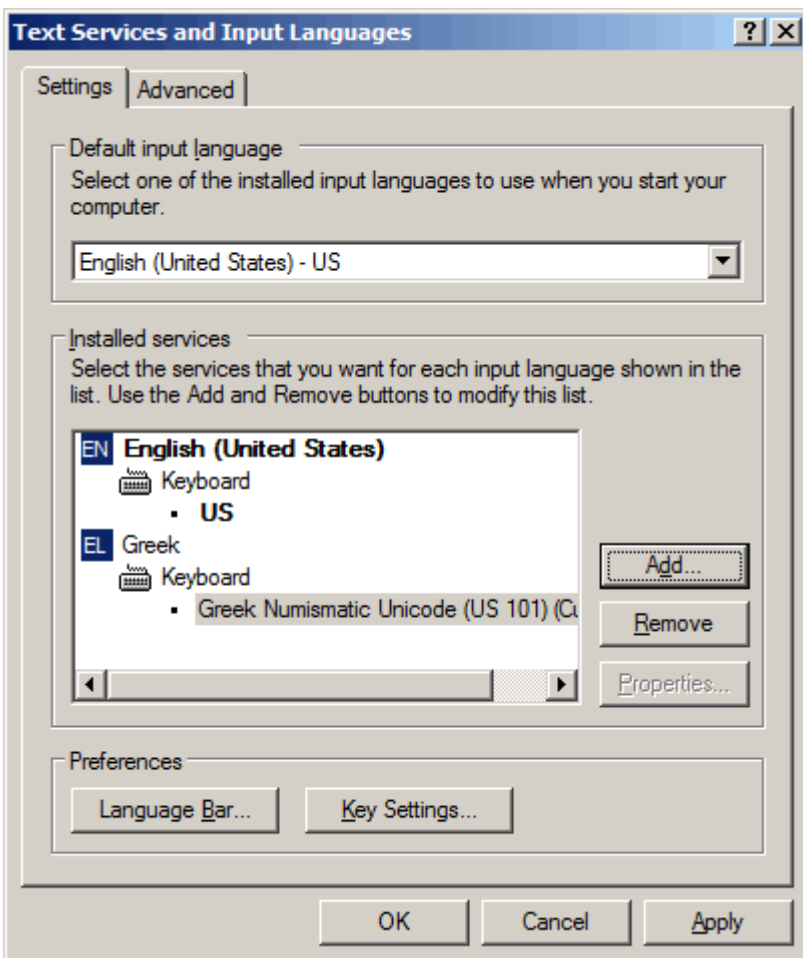


Figure 5: Seeing the New Keyboard Layout in the Text Services and Input Languages Dialog

When you click on the language bar, it will now include the language "Greek" for the custom keyboard (as in Figure 6). Choose either EN or EL to select the language to be used in the currently selected application.

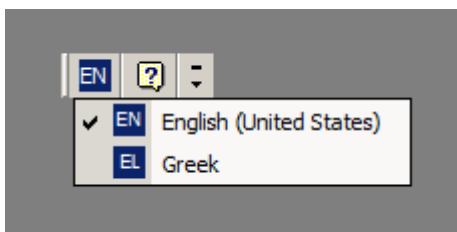


Figure 6: The Language Bar does not always tell you what kind of keyboard layout has been chosen.

Choose the EL (Greek) option in the Language bar to type Greek and other Unicode characters that are useful to numismatists. See the Keyboard Layout Chart for the available characters.

The language bar can be positioned anywhere on the user interface by clicking and dragging. If you click on the minimize button, the language bar appears as an icon in the system tray (Figure 7). If you right click on the language button in the system tray, more settings are revealed for customization.



Figure 7: The Language Bar appears as a button in the system tray.

Keyboard Layout Chart

Keyboard Layout for Greek Numismatic Unshifted

~	1	2	3	4	5	6	7	8	9	0	-	=	Backspace
Tab	θ	ω	ε	ρ	τ	ψ	υ	ι	ο	π	[]	\
Caps	α	σ	δ	φ	γ	η	ξ	κ	λ	;	'	Return	
Shift	ζ	χ	ς	ς	β	ν	μ	,	.	/	Shift		
Control	Alt	SP										Alt	Control

Shifted

~	!	@	#	\$	%	^	&	*	()	_	+	Backspace
Tab	Θ	Ω	Ε	Ρ	Τ	Ψ	Υ	Ι	Ο	Π	{	}	
Caps	Α	Σ	Δ	Φ	Γ	Η	Ξ	Κ	Λ	:	"	Return	
Shift	Z	X	C	ς	B	N	M	<	>	?	Shift		
Control	Alt	SP										Alt	Control

AltGr (Right Alt Key) or Ctrl-Alt

	↑	↗	→	↘	↓	↙	←	↖	∪	∩	-	_	Backspace
Tab	Ϟ		ε	Ϡ					Ϝ	Ϣ			
Caps		ς		ϡ									Return
Shift		Æ		F			M		.				Shift
Control	Alt	SP										Alt	Control

Shift-AltGr (Shift Right Alt Key) or Shift-Ctrl-Alt

													Backspace
Tab	⚡												
Caps													Return
Shift													Shift
Control	Alt	SP										Alt	Control

Characters Accessible with Greek Numismatic Keyboard

Unshifted:

A = α	U+03B1	GREEK SMALL LETTER ALPHA
B = β	U+03B2	GREEK SMALL LETTER BETA
C = Ϸ	U+03F2	GREEK LUNATE SIGMA SYMBOL
D = δ	U+03B4	GREEK SMALL LETTER DELTA
E = ε	U+03B5	GREEK SMALL LETTER EPSILON
F = φ	U+03C6	GREEK SMALL LETTER PHI
G = γ	U+03B3	GREEK SMALL LETTER GAMMA
H = η	U+03B7	GREEK SMALL LETTER ETA
I = ι	U+03B9	GREEK SMALL LETTER IOTA
J = ξ	U+03BE	GREEK SMALL LETTER XI
K = κ	U+03BA	GREEK SMALL LETTER KAPPA
L = λ	U+03BB	GREEK SMALL LETTER LAMBDA
M = μ	U+03BC	GREEK SMALL LETTER MU
N = ν	U+03BD	GREEK SMALL LETTER NU
O = ο	U+03BF	GREEK SMALL LETTER OMICRON
P = π	U+03C0	GREEK SMALL LETTER PI
Q = θ	U+03B8	GREEK SMALL LETTER THETA
R = ϱ	U+03C1	GREEK SMALL LETTER RHO
S = σ	U+03C3	GREEK SMALL LETTER SIGMA
T = τ	U+03C4	GREEK SMALL LETTER TAU
U = υ	U+03C5	GREEK SMALL LETTER UPSILON
V = Ϸ	U+03DB	GREEK SMALL LETTER STIGMA
W = ω	U+03C9	GREEK SMALL LETTER OMEGA
X = χ	U+03C7	GREEK SMALL LETTER CHI
Y = ψ	U+03C8	GREEK SMALL LETTER PSI
Z = ζ	U+03B6	GREEK SMALL LETTER ZETA

Shifted:

A = Α	U+0391	GREEK CAPITAL LETTER ALPHA
B = Β	U+0392	GREEK CAPITAL LETTER BETA
C = Ϸ	U+03F9	GREEK CAPITAL LUNATE SIGMA SYMBOL
D = Δ	U+0394	GREEK CAPITAL LETTER DELTA
E = Ε	U+0395	GREEK CAPITAL LETTER EPSILON
F = Φ	U+03A6	GREEK CAPITAL LETTER PHI
G = Γ	U+0393	GREEK CAPITAL LETTER GAMMA
H = Η	U+0397	GREEK CAPITAL LETTER ETA
I = Ι	U+0399	GREEK CAPITAL LETTER IOTA
J = Ξ	U+039E	GREEK CAPITAL LETTER XI
K = Κ	U+039A	GREEK CAPITAL LETTER KAPPA
L = Λ	U+039B	GREEK CAPITAL LETTER LAMDA
M = Μ	U+039C	GREEK CAPITAL LETTER MU
N = Ν	U+039D	GREEK CAPITAL LETTER NU
O = Ο	U+039F	GREEK CAPITAL LETTER OMICRON
P = Π	U+03A0	GREEK CAPITAL LETTER PI
Q = Θ	U+0398	GREEK CAPITAL LETTER THETA
R = Ρ	U+03A1	GREEK CAPITAL LETTER RHO
S = Σ	U+03A3	GREEK CAPITAL LETTER SIGMA
T = Τ	U+03A4	GREEK CAPITAL LETTER TAU
U = Υ	U+03A5	GREEK CAPITAL LETTER UPSILON

V = ζ	U+03DA	GREEK LETTER STIGMA
W = Ω	U+03A9	GREEK CAPITAL LETTER OMEGA
X = Χ	U+03A7	GREEK CAPITAL LETTER CHI
Y = Ψ	U+03A8	GREEK CAPITAL LETTER PSI
Z = Ζ	U+0396	GREEK CAPITAL LETTER ZETA

AltGr (right alt key) or Ctrl-Alt:

1 = ↑	U+2191	UPWARDS ARROW
2 = ↗	U+2197	NORTH EAST ARROW
3 = →	U+2192	RIGHTWARDS ARROW
4 = ↘	U+2198	SOUTH EAST ARROW
5 = ↓	U+2193	DOWNWARDS ARROW
6 = ↙	U+2199	SOUTH WEST ARROW
7 = ←	U+2190	LEFTWARDS ARROW
8 = ↖	U+2196	NORTH WEST ARROW
9 = ↻	U+21BB	CLOCKWISE OPEN CIRCLE ARROW
0 = ↺	U+21BA	ANTICLOCKWISE OPEN CIRCLE ARROW
hyphen = –	U+2013	EN DASH
equal = —	U+2014	EM DASH
period = ·	U+00B7	MIDDLE DOT
E = ε	U+03F5	GREEK LUNATE EPSILON SYMBOL
F = Ϝ	U+03F7	GREEK CAPITAL LETTER SHO (Bactrian letter)
M = Ϟ	U+03FA	GREEK CAPITAL LETTER SAN
O = Ø	U+00D8	LATIN CAPITAL LETTER O WITH STROKE
P = Ϙ	U+03E0	GREEK LETTER SAMPI
Q = Ϡ	U+03D8	GREEK LETTER ARCHAIC KOPPA (lollipop koppa)
R = Ϛ	U+211E	PRESCRIPTION TAKE
S = Ϻ	U+03C2	GREEK SMALL LETTER FINAL SIGMA
V = Ϝ	U+03DC	GREEK LETTER DIGAMMA
X = Æ	U+00C6	LATIN CAPITAL LETTER AE

Shift-AltGr (shifted right alt key) or Shift-Ctrl-Alt:

Q = Ϡ	U+03DE	GREEK LETTER KOPPA (lightning bolt koppa)
-------	--------	---

Note: Remember that you must select a font that contains the Unicode characters before they will display properly. Please refer to *Unicode Greek Fonts for Numismatists*, located at http://parthia.com/fonts/unicode_Greek.htm